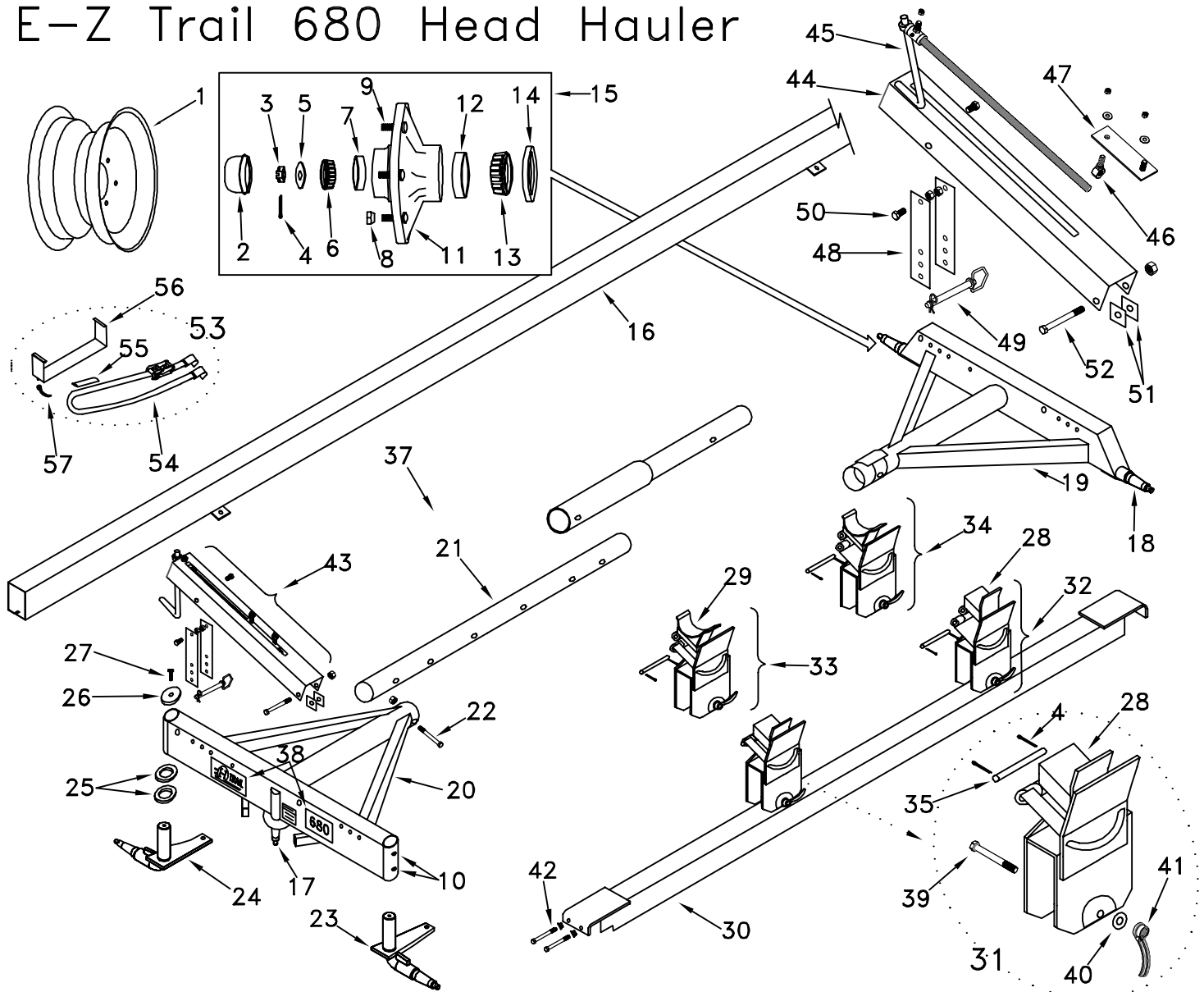
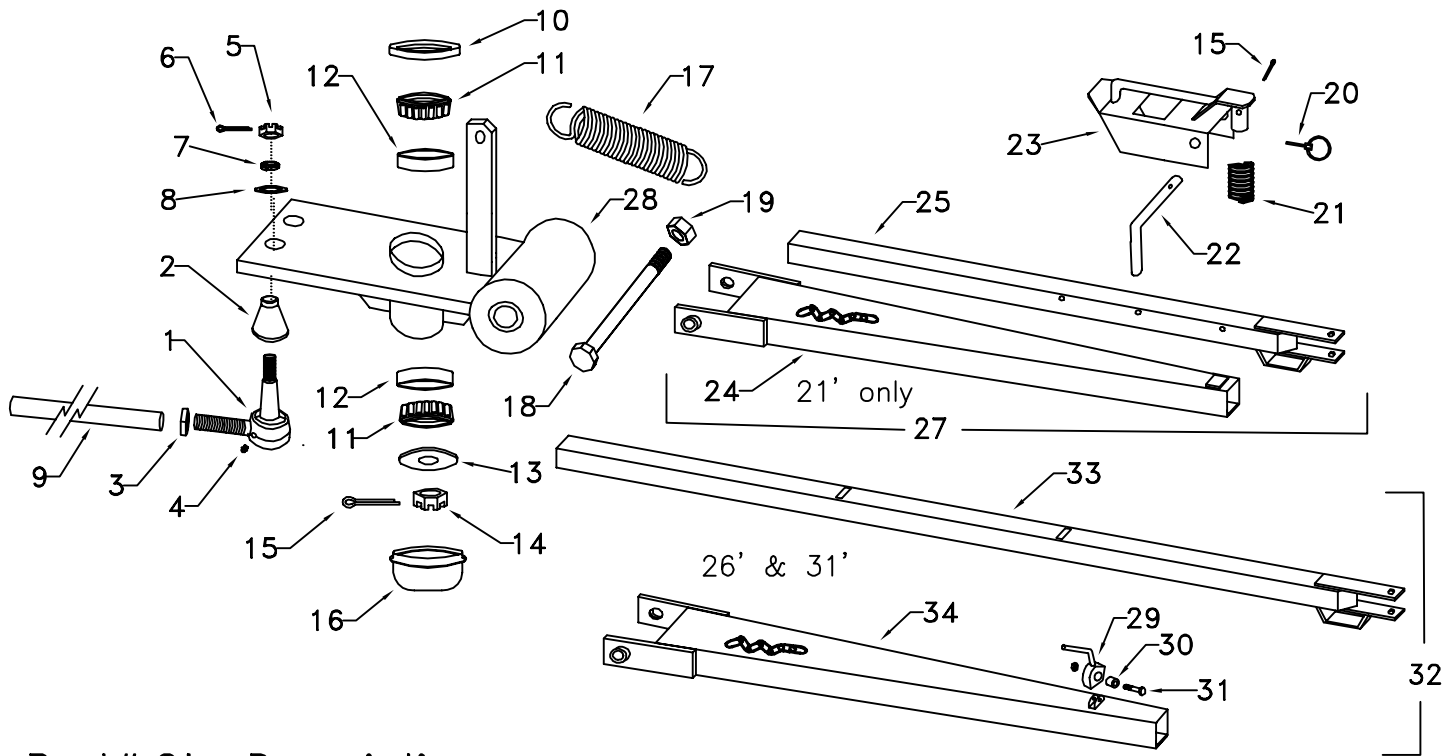


E-Z Trail 680 Head Hauler



#	Part#	Qty.	Description
1	636	4	Wheel, 10 x 6
	670	4	20.5x8x10 E Rge. Tire
	674	4	9.00-10 Tire 10 Ply
2	642	4	Dust Cap
3	641	4	5/8-18 Slotted Nut
4	1045	4	Cotter Pin
5	640	4	Washer
6	639	4	Outer Bearing
7	638	4	Outer Race
8	865	24	Wheel Nut
9	864	24	Wheel Stud
10	1093	12	Grease Zerk
11	635	4	Hub w/Races
12	1084	4	Inner Race
13	1085	4	Inner Bearing
14	632	4	Grease Seal
15	643	4	Hub Assembly
16	688	1	21' Upper Rail
16	686	1	26' Upper Rail
16	687	1	31' Upper Rail
17	679	1	Steering Spindle Assy
18	628	2	Rear Spindle
19	806	1	Rear Axle w/Spindles
20	603	1	Front Axle
21	696	1	Reach 87"
22	610	4	1/2 x 3.5 Bolt & Nut
23	621	1	Left Front Spindle
24	620	1	Right Front Spindle
25	622	4	Machinery Bushing
26	816	2	Bent Spindle Cap
27	1091	2	3/8-16 x 1 Bolt
28	655	2	Flat Top Saddle
29	631	2	U Saddle - Pipe Frame
30	617	1	12' Lower Rail for 21'
30	618	1	15'6" Lower Rail for 26' & 31'
31	656	1	Front Flat Flipper Bracket Assembly
32	657	1	Rear Flat Flipper Bracket Assembly
33	626	1	Front U Slider Bracket Assembly
34	627	1	Rear U Slider Bracket Assembly
35	633	2	U Bracket Hinge Pin
37	634	1	3'6" Reach Extension, 26' & 31'
38	678	1	Decal Set
39	658	2	5/8 x 5-1/2 Fine Thread Bolt
40	665	2	5/8 Flat Washer
41	660	2	5/8 Handle Nut
42	616	4	3/8 x 4 Bolt & Flange Nut
43	72454	2	Crank Incline Assembly
44	72400	2	Channel Bracket
45	648	2	Adjustment Screw Assembly
46	645	2	Nut Bolt
47	644	2	Incline Clamp Plate
48	675	4	Channel Support Strap
49	669	2	Hitchpin 3/4 x 4-1/4
50	841	4	3/4 x 1-1/2 Bolt & Locknut
51	676	4	Channel Spacer
52	845	2	3/4 x 5-1/2 Bolt & Locknut
53	HHR	1	Optional Ratchet Kit
54	680	1	12' Ratchet Strap Assembly
55	683	1	Strap Protector
56	677	1	Tie Down Storage Tray
57	659	1	3/8 Handle Nut

Steering Assembly for 680 Head Hauler



#	Part#	Qty.	Description
1	1092	4	Tie Rod End (Inc'd 2-6)
2	1043	4	Rubber Cover
3	1088	4	3/4-16 Jam Nut
4	1093	6	Grease Zerk
5	1042	4	9/16-18 Slotted Nut
6	1046	4	Cotter Pin
7	1048	4	5/8" Lock Washer
8	640	4	5/8" Flat Washer
9	828	2	Tie Rod
10	1081	1	Seal
11	1082	2	Steering Frame Bearing
12	1083	2	Steering Frame Race
13	1089	1	Washer
14	1087	1	3/4-16 Slotted Nut
15	1045	2	Cotter Pin
16	1098	1	Steering Frame Cap
17	1013	1	Spring
18	1014	1	Tongue Bolt
19	1020	1	7/8-9 Lock Nut
20	1017	1	Lock Pin
21	1010	1	Spring
22	1011	1	Latch Pin
23	1016	1	Latch
24	1061	1	Tongue Outer
25	1062	1	Tongue Inner
27	1063	1	E-Z Hitch Ass'y, 21'
28	1080	1	Steering Frame
29	609	1	Cam Latch
30	607	1	Cam Latch Bushing
31	606	1	7/16x2 Bolt & Locknut
32	612	1	Long Tongue, 26' & 31'
33	613	1	Long Tongue Inner *
34	611	1	Long Tongue Outer *

* Specify cam latch position:
 3" from front of tongue outer on '06 and older
 10" from front of tongue outer on '06 and newer

SET-UP & OPERATING INSTRUCTIONS

1. Bolt wheels in place & torque to approx. 100 ft. lbs.
2. Attach tongue with 7/8 x 9-1/2 bolt and lock nut. Raise end of tongue & hook lift assist spring to chain on tongue.
3. Remove bolts in the center reach pipe and slide axles out to 12'4" wheel base for the 21' model. The 26' and 31' models require a 3'6" extension for a 15'10" wheel base.
4. Remove the four white stakes and attach the lower rail to the left side using the 3/8 x 4 bolts removed from the stakes. Mount the slider brackets on the lower rail with 5/8 x 5-1/2 bolts and handle nuts.
5. Attach the crank incline assembly to right side of the front & rear axles. First fasten the support straps inside the channel bracket with 3/4 x 1-1/2 bolts & locknuts, then fasten the support straps to the axle (usually using the middle holes) with hitch pin. Fasten the bottom end to the axle using spacers and a 3/4 x 5-1/2 bolt & locknut.
6. Attach the long rail, short end forward, to the crank incline brackets with the 1/2" locknuts, leaving the nuts loose enough for the rail to slide. Observe the degree of slope: it must be steep enough so the lower feeder house will break away without striking the lower rail. If necessary, insert hitch pin thru a different hole in the support straps.
7. Lubricate all grease points. Inflate tires to 60 PSI normal pressure; 12 row heads may require up to 70 PSI. Securely tie down the head being transported using chains or the optional tie-down strap kit. Always exercise safety first! Proper lighting is required when using on public highways.

E-Z Trail, Inc.
 Arthur, IL 217-543-3471
www.e-ztrail.com